

Banquette RIPPLE 240



Description

Assise en ciment hydrofugé (ciment certifié eco operando). Le ciment certifié eco operando émet 35% d'émissions de CO2 en moins que le ciment ordinaire. Agrégats marbre ou carrière concassée.

Dimensions

Longueur : 2400mm
Largeur : 600mm
Hauteur assise : 450mm

Poids

660 kg

Les options

Autres coloris (nous consulter, augmentation en fonction de la couleur. *Demander un devis.*)

Couleurs de finition



Marron



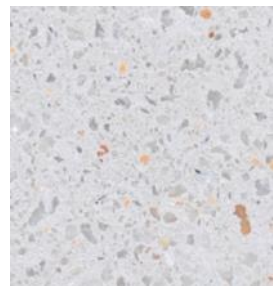
Noir



Ocre



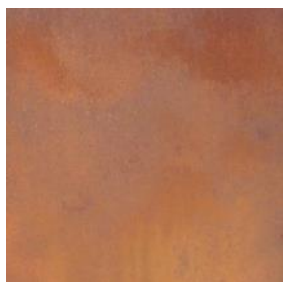
Gris



Blanc

Finition de surface

Revêtements composés de liants qui intègrent des charges de métal concassé et donnent aux éléments urbains l'apparence réelle du métal ainsi que son oxydation et ne se détériorent pas avec le temps.



Corten



Noir graphite

Couleurs en options



CARACTERÍSTICAS / FEATURES



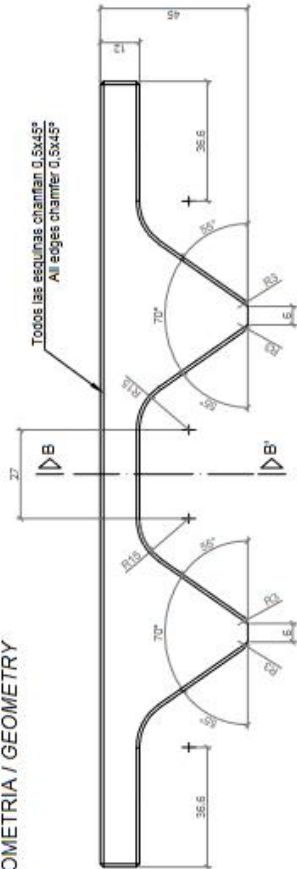
Material hormigón Petra 1
Acabado decapado e hidrofugado
Dimensiones l. 240, a. 60, h. 45 cm
Color ver carta de colores
Fijación apoyado por su propio peso o mediante resina epoxy
Peso 660 Kg
Palet 250 x 70 cm

Material precast concrete Petra 1
Finish etched and waterproofed
Dimensions l. 240, w. 60, h. 45 cm
Colour see colour catalogue
Fixing resting on the ground or with epoxy resin
Weight 660 Kg
Pallet 250 x 70 cm

diseñador / design: In-Tenta



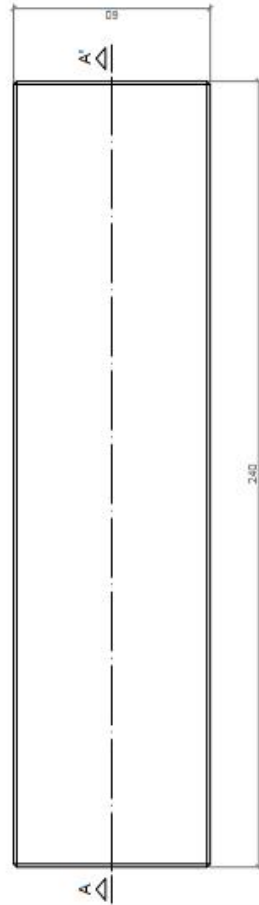
GEOMETRIA / GEOMETRY



ALZADO / FRONT VIEW



PERFIL / RIGHT SIDE

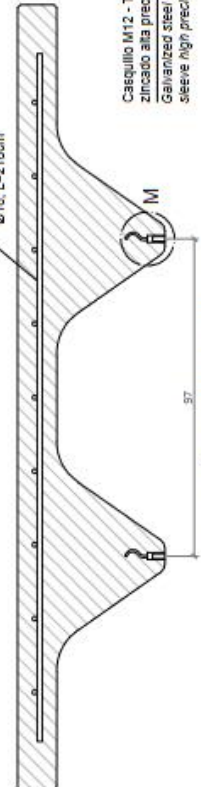


PLANTA / TOP VIEW

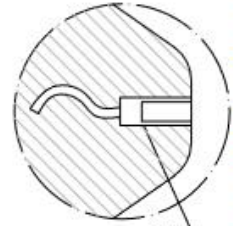
ESC. 1:15

ESPECIFICACIONES / SPECIFICATIONS

Redes electrosoldadas
Ø16, L=210cm
Welded mesh
Ø16, L=210cm



SECCIÓN A-A' / SECTION A-A'



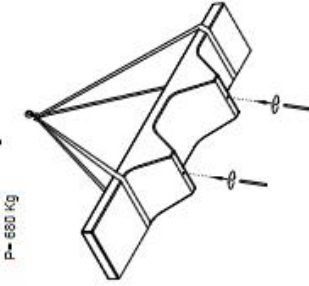
Casquillo M12 - Tubo acero
zincado alta precisión
Galvanized steel / threaded
seeve high precision M12

DETALLE M / DETALLE M

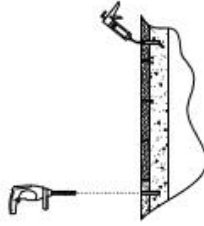
MANIPULACIÓN E INSTALACIÓN / HANDLING AND INSTALLATION

1 Elevar y enroscar la varilla
lift and thread the rod

Elevación / Hoisting
P= 660 Kg



2 Perforar agujero y verter resina epoxy
drill hole and pour resin epoxy



3 Insertar la varilla en el agujero para instalar / Insert metal rod in hole for install

