

## Banquette TARGA B



### Description

Assise en ciment hydrofugé ( ciment certifié eco operando). Le ciment certifié eco operando émet 35% d'émissions de CO2 en moins que le ciment ordinaire. Agrégats siliceux.

### Dimensions

Longueur : 200 cm  
Largeur : 80 cm  
Hauteur assise : 48 cm

### Poids

700 kg

### Les options

Autres coloris (nous consulter, augmentation en fonction de la couleur. *Demander un devis.* )

## Couleurs de finition



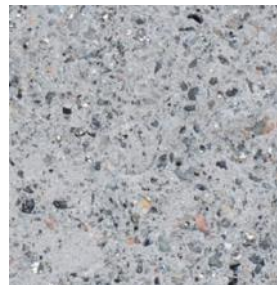
Marron



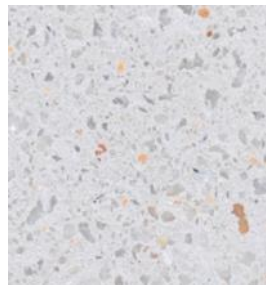
Noir



Ocre



Gris



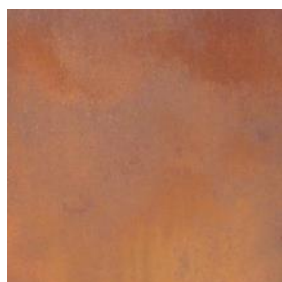
Blanc

## Finition de surface

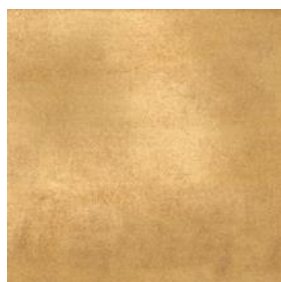
Revêtements composés de liants qui intègrent des charges de métal concassé et donnent aux éléments urbains l'apparence réelle du métal ainsi que son oxydation et ne se détériorent pas avec le temps.



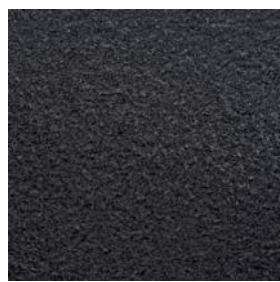
Bronze



Corten



Golden



Noir graphite

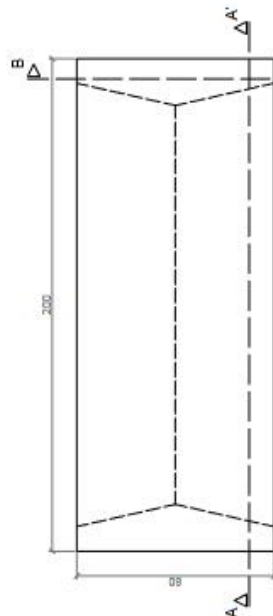
**CARACTERÍSTICAS / FEATURES**

**Material** hormigón Petra 1  
**Acabado** despedido e hidrofugado  
**Dimensiones** l. 200, a. 80, h. 48 cm  
**Color** ver carta de colores  
**Fijación** apoyado por su propio peso o mediante resina epoxi  
**Peso** 700 Kg  
**Pallet** 210 x 90 cm

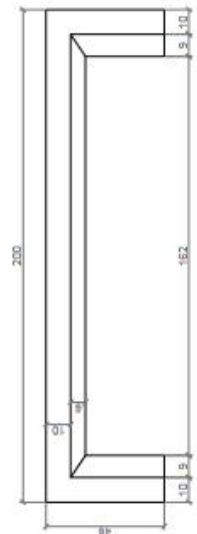
**Material** precast concrete Petra 1  
**Finish** scaled and waterproofed  
**Dimensions** l. 200, w. 80, h. 48 cm  
**Colour** see colour catalogue  
**Fixing** resting on the ground or with epoxy resin  
**Weight** 700 Kg  
**Pallet** 210 x 90 cm

diseñador / design: magourban

**GEOMETRIA / GEOMETRY**



PLANTA / TOP VIEW



ALZADO / FRONT VIEW



PERFIL / PROFIL VIEW

ESCALA / SCALE 1/20

**ESPECIFICACIONES / SPECIFICATIONS**

Detalle D, OPCIONAL  
(Instalación con varilla metálica)  
Detail D (OPTIONAL)  
(Installation with metal rod)



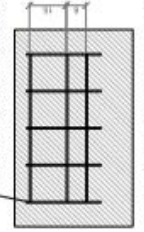
Casquillo M12 - Acero zincado alta precisión  
Threaded sleeve M12 - Galvanized  
steel high precision



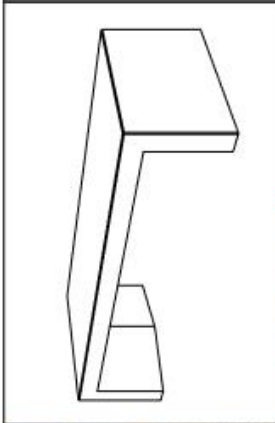
SECCIÓN A-A' / SECTION A-A'

Detalle D (OPCIONAL)  
Detail D (OPTIONAL)

Malla electrosoldada con barra de Ø6 mm cada 150 mm  
Electrically soldered grating rods of Ø6 mm each 150 mm



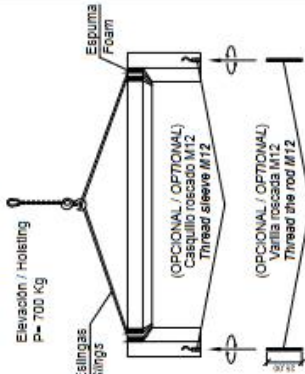
SECCIÓN B-B' / SECTION B-B'



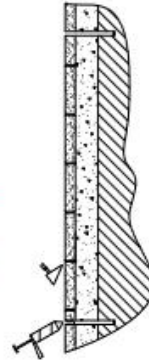
**MANIPULACIÓN E INSTALACIÓN / HANDLING AND INSTALLATION**

1 Evitar y empujar varillas inferiores  
Lifting and screwing of lower links

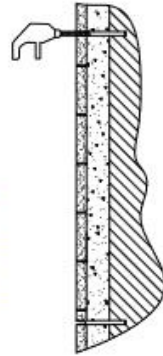
MUY IMPORTANTE / VERY IMPORTANT  
Proteger las esquinas con espuma de empaque  
Protect the corners with packing foam



3 Verter resina epoxy  
Pour resin epoxy



2 Perforar agujeros de Ø1,4cm  
Drill holes of Ø1,4cm



4 Insertar las varillas M12 en los agujeros  
Insert metal rods M12 in holes

