

Assise TIPPY GAP B220



Description

Assise droite en ciment Petra 1. C'est une banquette modulaire avec des pièces droites, concaves, convexes, en demi cercle et en coude qui permet de créer des formes sur-mesure. Le ciment certifié eco operando émet 35% d'émissions de CO2 en moins que le ciment ordinaire.

Dimensions

Longueur : 220 cm

Largueur : 61 cm

Hauteur : 46 cm

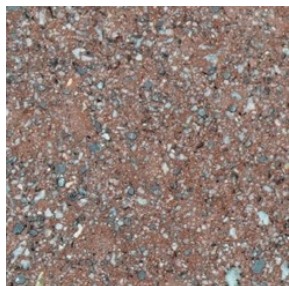
Poids

660 kg

Les options

Autres coloris (nous consulter, augmentation en fonction de la couleur. *Demander un devis.*)

Couleurs de finition



Marron



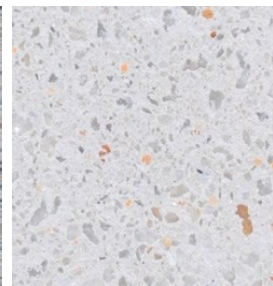
Noir



Ocre



Gris



Blanc

Coloris optionnels



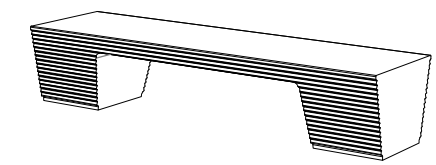
CARACTERÍSTICAS / FEATURES

Material hormigón petra 1
Acabado decapado e hidrofugado
Dimensiones l. 220, a. 61, h. 46 cm.
Color ver carta de colores
Fijación simplemente apoyado o mediante varillas metálicas
Peso 660 Kg
Bulto 220 x 80 x 60 cm
Peso bulto 680 Kg



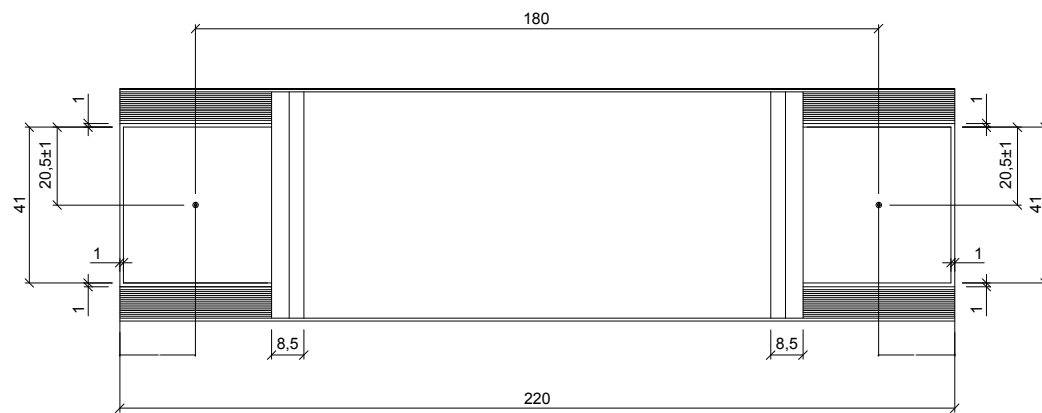
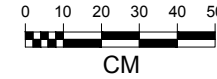
+33 297 639 431
 info@avenir-voirie.fr

diseñador / design: Ton Riera

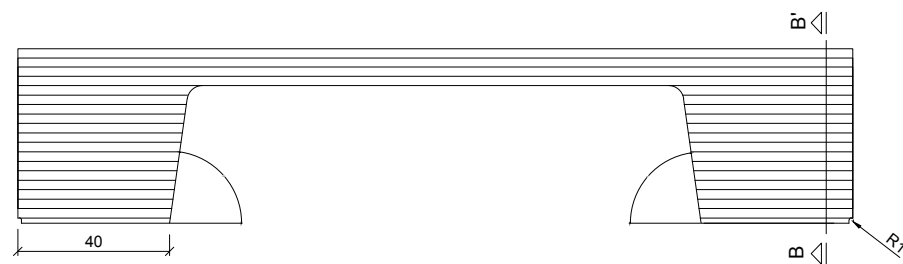


TIPPY GAP B220

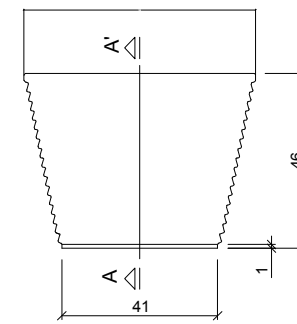
GEOMETRIA / GEOMETRY



VISTA INFERIOR / BOTTOM VIEW



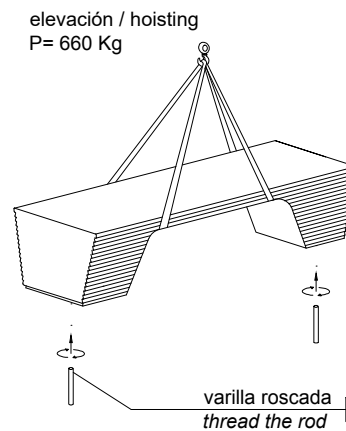
ALZADO / FRONT VIEW



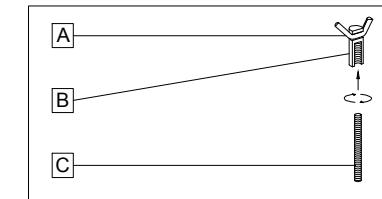
PERFIL / RIGHT SIDE

MANIPULACIÓN E INSTALACIÓN / HANDLING AND INSTALLATION

1 enroskar la varilla / *thread the rod*

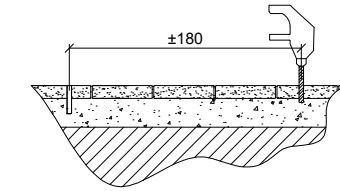


SISTEMA DE FIJACIÓN / ANCHORAGE SYSTEM

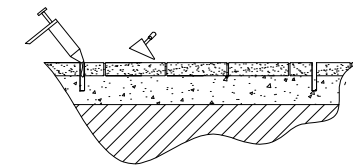


- A barra corrugada / *corrugated rod*
- B casquillo roscado / *thread sleeve*
- C varilla roscada / *thread the rod*

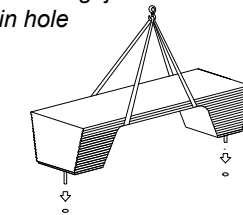
2 perforar 2 agujeros Ø24 a distancia 180 cm
drill 2 holes Ø24 each at a distance of 180 cm



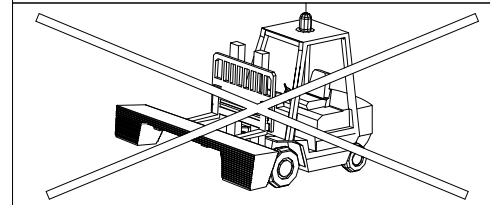
3 verter resina epoxy / *pour resin epoxy*



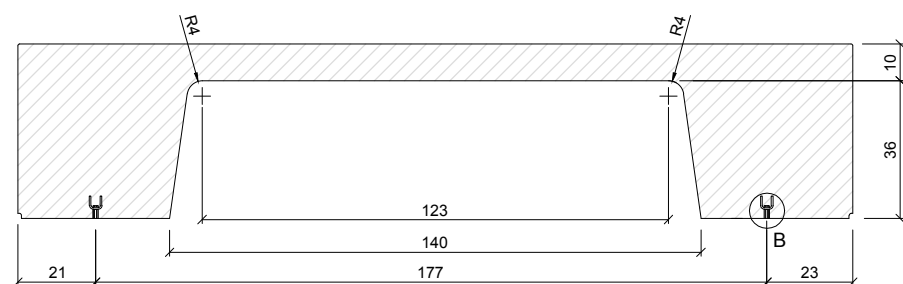
4 insertar la varilla en el agujero
insert metal rod in hole



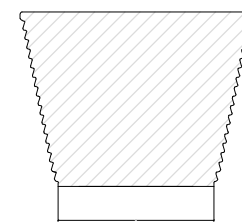
ATENCIÓN!!!! no usar pala elevadora para la manipulación
 ATTENTION!!!! shouldn't use Forklift for handling



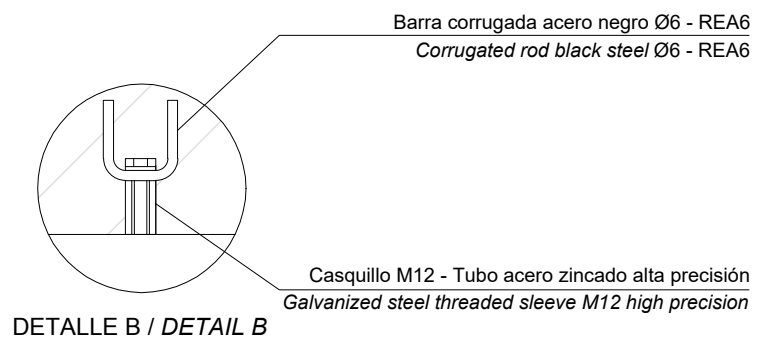
ESPECIFICACIONES / SPECIFICATIONS



SECCIÓN A-A' / SECTION A-A'



SECCIÓN B-B' / SECTION B-B'



DETALLE B / DETAIL B