

## CARACTERÍSTICAS / FEATURES

**Material** hormigón petra2  
**Acabado** decapado  
**Dimensiones** Ø55, h. 110 cm.  
**Color** ver carta de colores  
**Fijación** simplemente apoyado o mediate varillas metálicas  
**Peso / Capacidad:** 119 Kg / 70 L  
**Bulto** 120 x 110 x 125 cm [ 4u / bulto ]  
**Peso bulto** 495 Kg

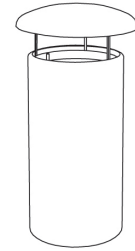
**Material** precast concrete petra2  
**Finish** scaled  
**Dimensions** Ø55, h. 110 cm.  
**Colour** see colour catalogue  
**Fixing** resting on the ground & or anchored with metal rod  
**Weight / Capacity** 119 Kg / 70 L  
**Package** 120 x 110 x 120 cm [ 4u / bulto ]  
**Weight package** 495 Kg



**AVENIR VOIRIE**

16, place Théodore Fantin Latour  
 56000 VANNES  
 → 00 33 (0) 297 639 431

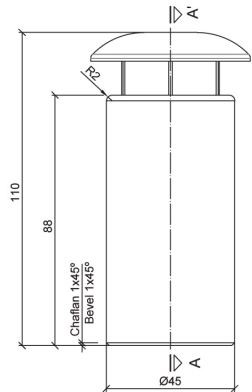
[info@avenir-voirie.fr](mailto:info@avenir-voirie.fr)  
[www.avenir-voirie.fr](http://www.avenir-voirie.fr)



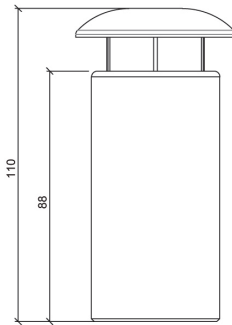
## GEOMETRIA / GEOMETRY

## SET / CONJUNTO

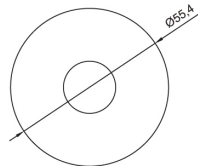
## ACCESORIO / ACCESSORIES



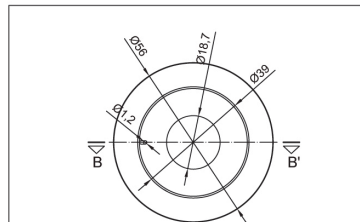
ALZADO / FRONT VIEW



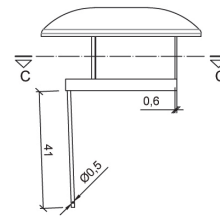
PERFIL / PROFIL VIEW



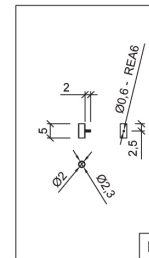
PLANTA / TOP VIEW



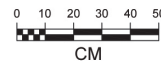
VISTA INFERIOR / BOTTOM VIEW



PLANTA / TOP VIEW



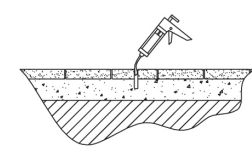
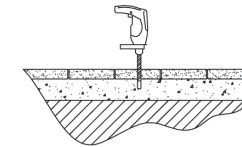
B



CM

## MANIPULACIÓN E INSTALACIÓN / HANDLING AND INSTALLATION

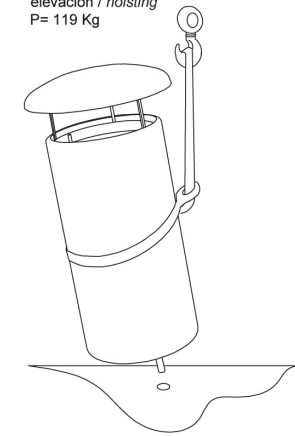
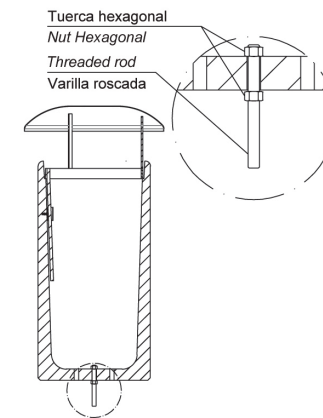
- 1 Perforar agujero y verter resina epoxy dentro / Drill hole and pour resin epoxy inside hole



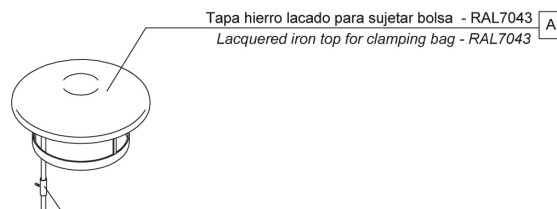
- 2 Posicionar la varilla en el agujero central y fijar con tuercas hexagonales / Place the threaded rod into the center hole and fix with nut hexagonal

- 3 Insertar varilla roscada en agujero / Insert metal threaded rod in hole

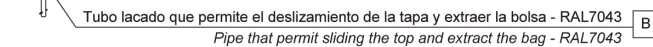
elevación / hoisting  
 P= 119 Kg



## ESPECIFICACIONES / SPECIFICATIONS

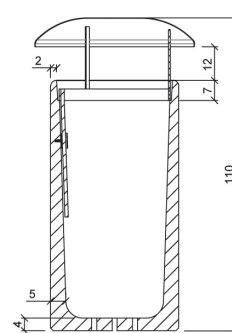


A

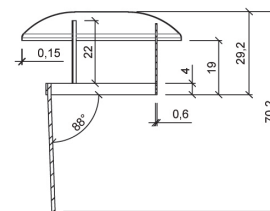


B

DETALLE ACCESORIO / DETAIL ACCESSORIES



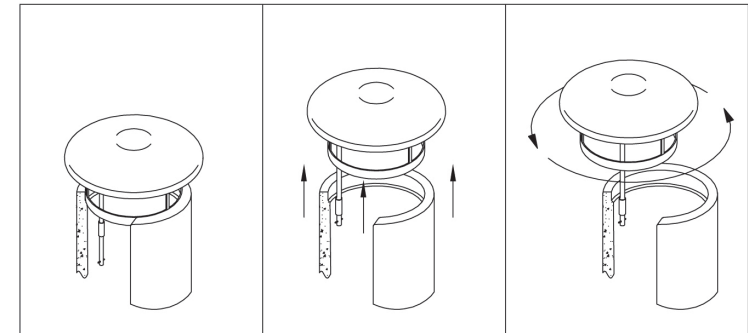
SECCIÓN A-A' / SECTION A-A'



SECCIÓN B-B' / SECTION B-B'



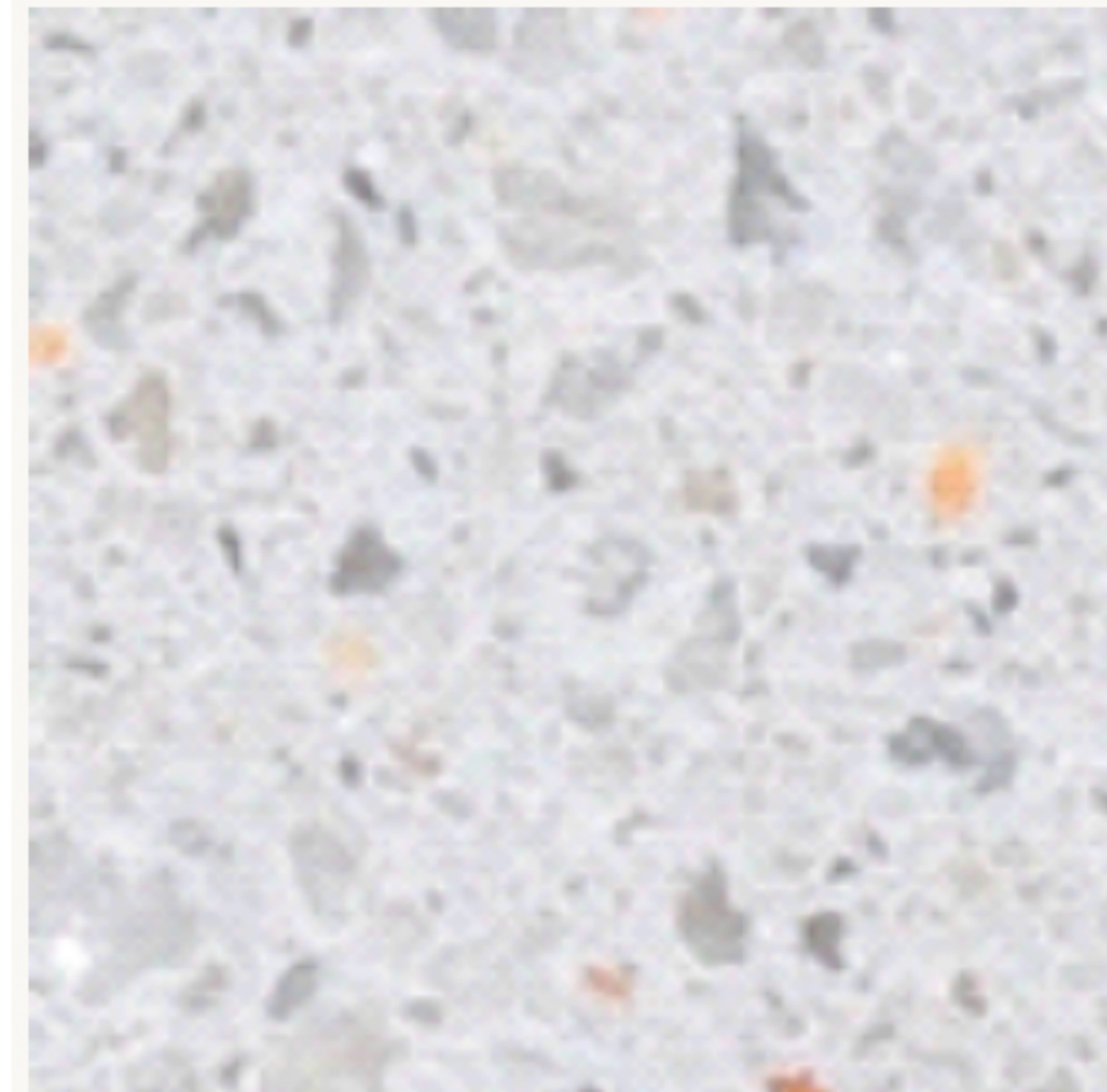
SECCIÓN C-C' / SECTION C-C'



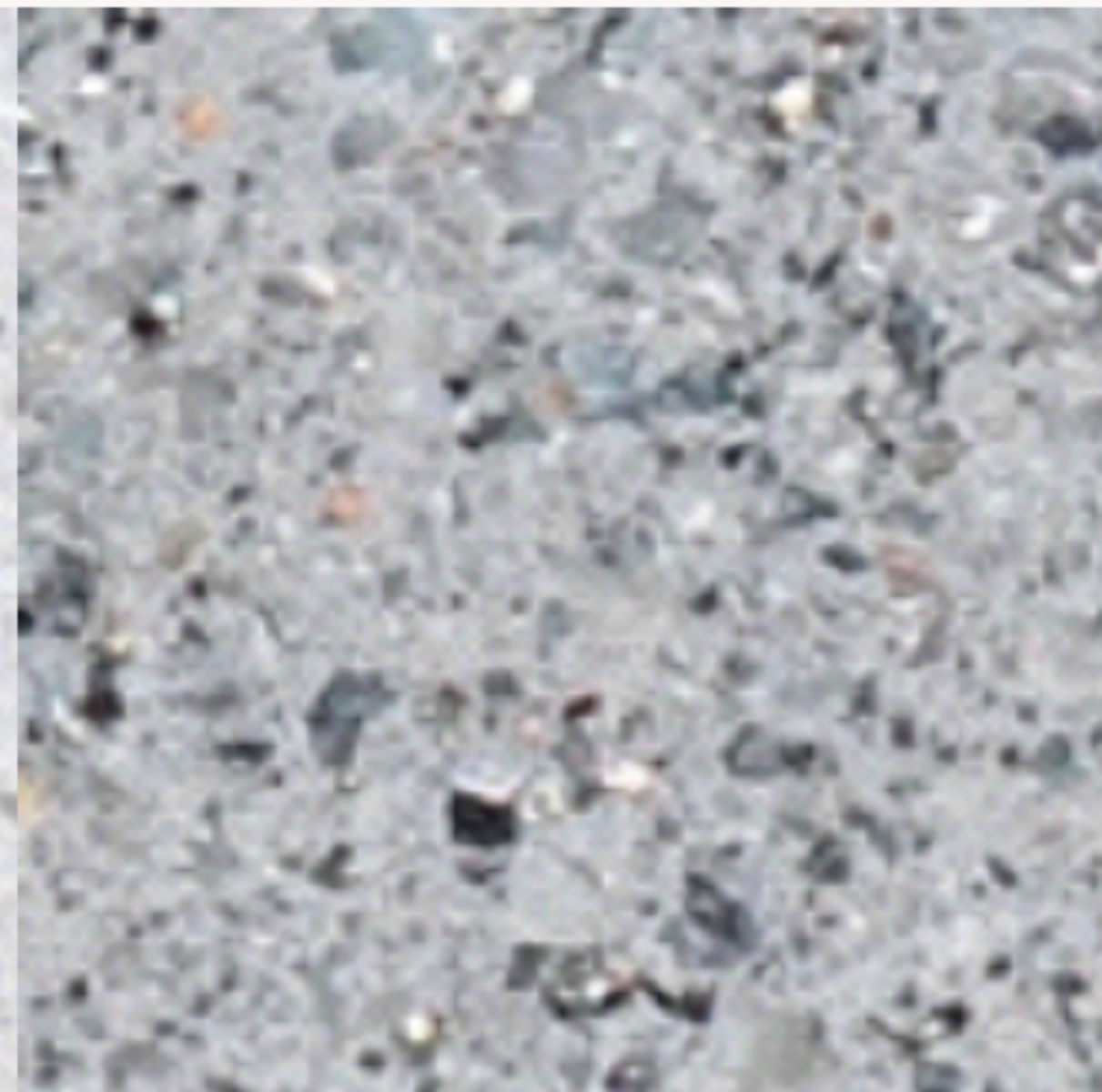
DETALLE DE EXTRACCIÓN BOLSA / DETAIL OF HOW EXTRACT BAG

# COLORIS STANDARDS

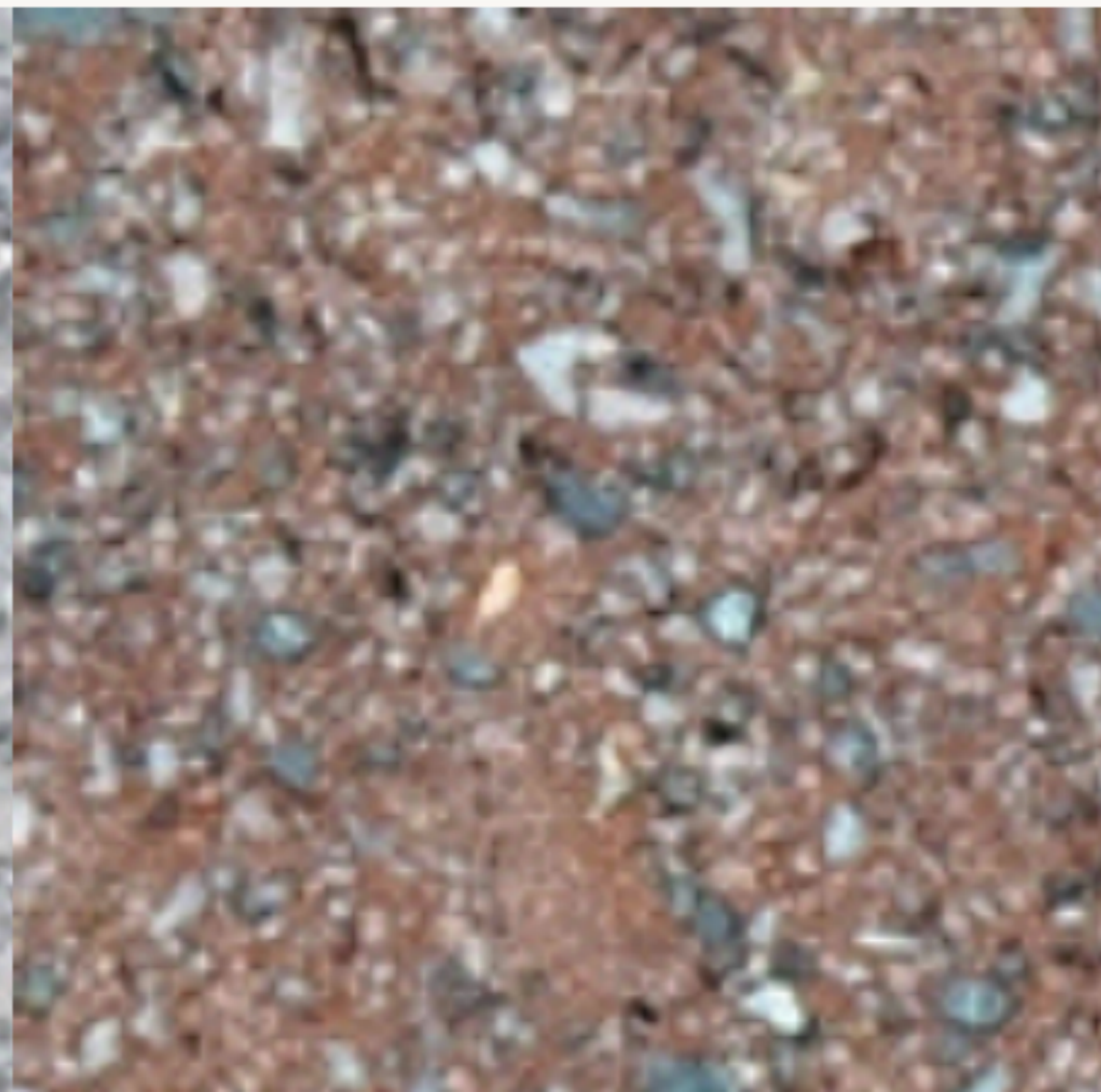
Blanc Petra 1



Gris Petra 1



Marron Petra 1



Ocre Petra 1



Noir Petra 1

